



(C04) 60L POWERFUL Centrifugal Misting Fan
(C05) POWERFUL Ceiling Centrifugal Mount Misting Fan

C04



Technical Data	
Dimension	60 cm diameter 58 cm height 165 cm depth
Power consumption	220V, 50Hz, 600W
Wind capacity	1500 rpm, 6600m ³ /hr
Wind Distance	Up to 10 m
Mist duration	6 hour
Noise	65 db

Features

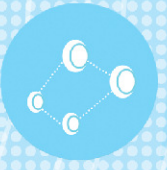
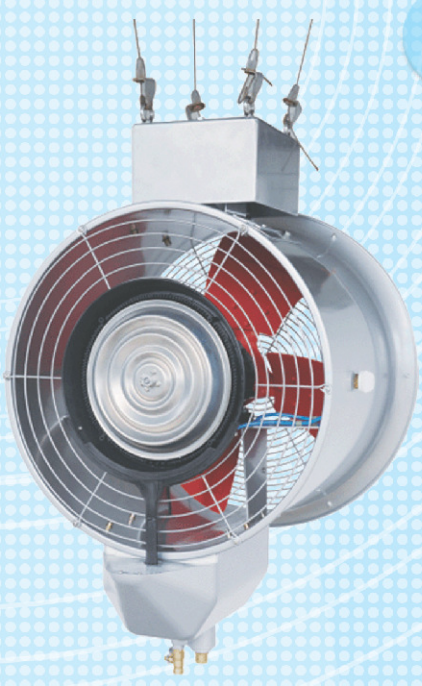


Powerful wind



Adjustable mist volume

C05



Stable wheels



Auto fill water



Technical Data	
Dimension	50 cm diameter 100 cm height 90 cm depth
Power consumption	220V, 50Hz, 500W
Wind capacity	1500 rpm, 6600m ³ /hr
Wind Distance	Up to 10m
Mist duration	auto-filled by water tap
Noise	70 db